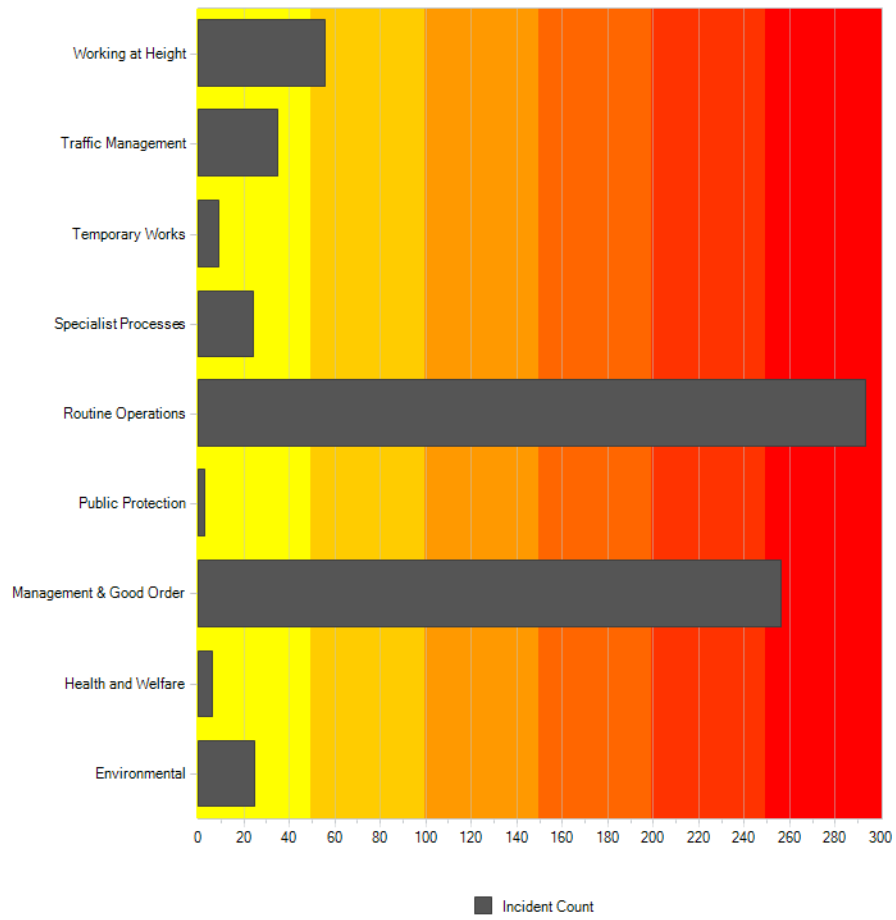


# STRATEGIC SUMMARY

INCIDENT DRIVERS (NUMBER OF INCIDENTS BY CATEGORY)

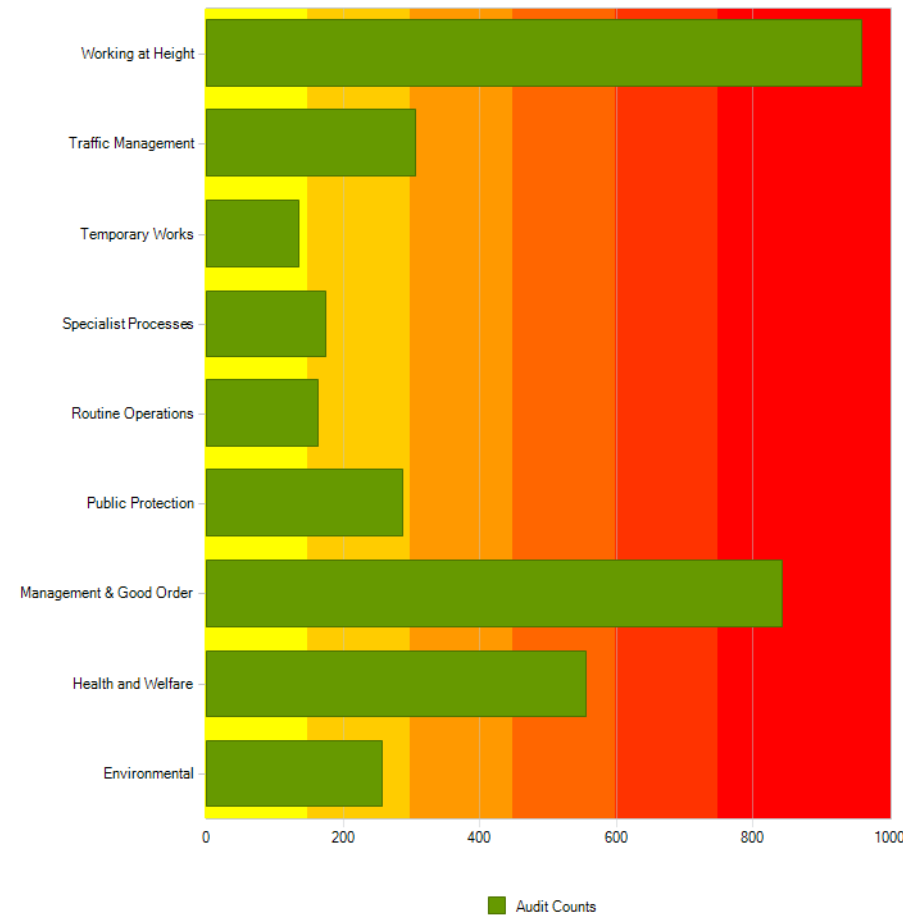


ACCIDENT DETAILS SHOW THAT DESPITE WORKING AT HEIGHT POSING SIGNIFICANT RISK AREA IN FURTHERBUILD'S OPERATIONS, THE EFFORTS IN INSPECTION AND BEHAVIOURAL SAFETY ARE MAINTAINING A LOW INCIDENT RATE FOR THESE OPERATIONS.

THE MOST INCIDENTS OCCUR IN THE CATEGORIES OF 'MANAGEMENT/GOOD ORDER' AND 'ROUTINE OPERATIONS'. THESE ARE AREAS WHERE INCREASED IMPACT OF INSPECTION AND BEHAVIOURAL SAFETY WILL BE BENEFICIAL.

ACTIVESHE'S INCIDENT ANALYSIS ALLOWS CAUSAL FACTOR ANALYSIS, TO INFORM THE STRATEGIC SHE BRIEFINGS FOR ADVISERS AND SITE TEAMS.

SHE TEAM SENSITIVITY (INSPN. CHECKS BY CATEGORY)



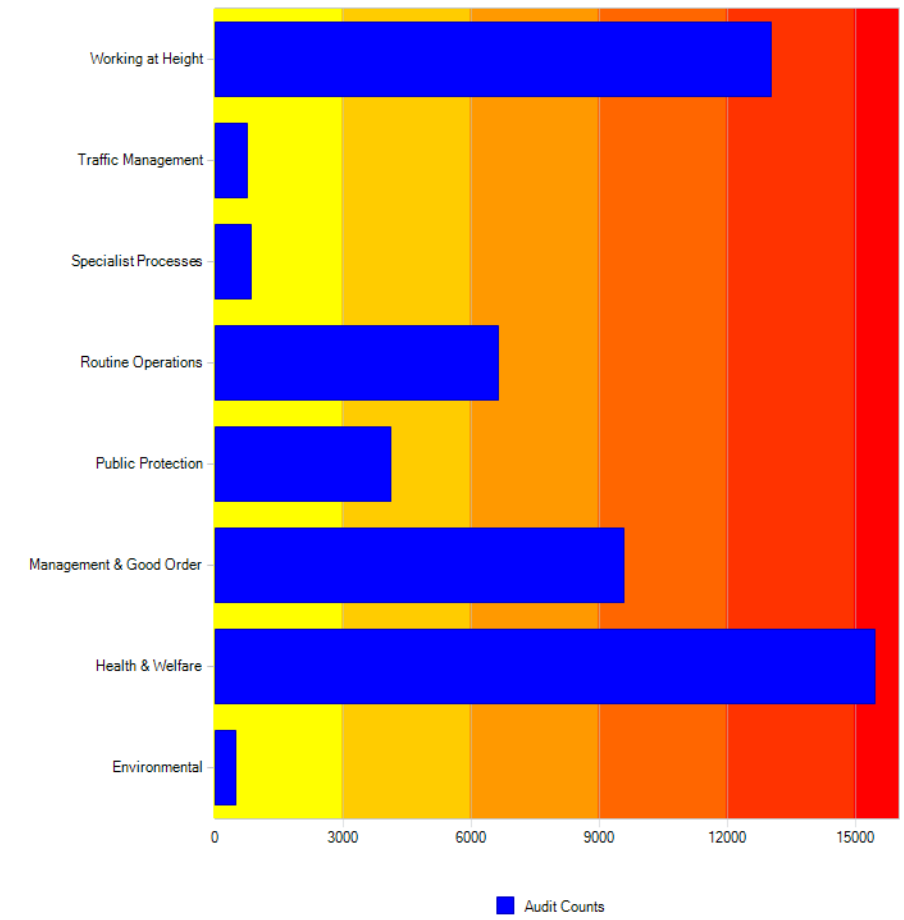
ONGOING FOCUS ON WORK AT HEIGHT IS PLAYING A SIGNIFICANT ROLE IN MAINTAINING A LOW INCIDENT RATES IN THIS AREA.

HEALTH AND WELFARE HAS A HIGH FOCUS (AS PER MANAGEMENT INSTRUCTION) TO SHOW THE IMPORTANCE OF STAFF WELFARE TO THE BUSINESS. LOW INCIDENT RATES INDICATE THAT FOCUS ON THIS AREA COULD BE REDUCED SLIGHTLY.

MANAGEMENT AND GOOD ORDER HAS A HIGH FOCUS, HOWEVER THE INCIDENTS RATE IS HIGH FOR THIS AREA - ACTIVESHE CAUSAL FACTOR ANALYSIS CAN HELP REFOCUS SITE INSPECTIONS TO DRIVE DOWN THE INCIDENTS RATE.

ROUTINE OPERATIONS APPEAR UNDER-SCRUTINISED - RECOMMEND ACTIVESHE REVIEW OF THE DETAILED PATTERN OF INCIDENTS AND INCREASING FOCUS ON THIS AREA BY SHE ADVISERS.

MANAGEMENT SENSITIVITY ('CONVERSATIONS' BY CATEGORY)



BEHAVIOURAL SAFETY SEEMS TO HAVE A REASONABLE BALANCE BETWEEN FOCUS AREAS AND THE INCIDENT DRIVERS - ALTHOUGH ROUTINE OPERATIONS IS SLIGHTLY LOWER THAN WE WOULD PREFER.

ROUTINE OPERATIONS FOCUS MAY BE TIGHTENED AND INCIDENT RESULTS IMPROVED IF THE PROPOSED ACTIVESHE INCIDENT ANALYSIS REVEALS PARTICULAR OPERATIONAL RISKS THAT CAN BE FED BACK TO THE SITE TEAMS.

## TIMELINE 'HEATMAPS'

### INCIDENT CATEGORIES - HEAT MAP (WHAT ACTIVITY CATEGORIES 'DRIVE' INCIDENTS?)

Answer	2012 Jan	2012 Feb	2012 Mar	2012 Apr	2012 May	2012 Jun	2012 Jul	2012 Aug	2012 Sep	2012 Oct	2012 Nov	2012 Dec	2013 Jan	2013 Feb	2013 Mar	2013 Apr	2013 May	2013 Jun	2013 Jul
Environmental	5	1			1	1	5	1			1	2		5	1			1	1
Health and Welfare		1				1		1				1			1				1
Management & Good Order	16	14	14	14	12	16	15	14	14	17	10	15	7	15	14	14	17	9	9
Public Protection		1						1							1				
Routine Operations	18	12	9	13	18	27	17	14	9	16	16	26	10	14	13	9	16	15	21
Specialist Processes	3				3	2	3				3	2	1	2				3	2
Traffic Management	2	2		2	4	2	2	2		2	4	1	1	2	2		2	4	1
Working at Height	4	1	2	6	4	1	4	1	2	5	4	4		4	1	2	5	4	2

INCIDENT DRIVERS DO NOT VARY MUCH THROUGH TIME OVER THE 18 MONTH HORIZON OF THIS REPORT. THIS CORRESPONDS TO THE UNCHANGING SHE SENSITIVITY BRIEFINGS GIVEN TO ADVISORY STAFF AND SITE TEAMS FOR THIS PERIOD.

### SITE INSPECTION CATEGORIES - RISK SENSITIVITY HEAT MAP (WHERE DO SAFETY ADVISERS SPEND THEIR TIME?)

Section Reporting Name	2012 Jan	2012 Feb	2012 Mar	2012 Apr	2012 May	2012 Jun	2012 Jul	2012 Aug	2012 Sep	2012 Oct	2012 Nov	2012 Dec	2013 Jan	2013 Feb	2013 Mar	2013 Apr	2013 May	2013 Jun	2013 Jul
Environmental	12	16	12	16	20	8	14	12	16	14	18	10	18	14	16	14	14	10	3
Health and Welfare	26	34	23	37	44	16	30	26	34	30	35	25	35	30	35	31	30	25	6
Management & Good Order	34	56	31	59	56	34	45	34	56	45	54	36	54	45	55	46	45	36	15
Public Protection	12	18	13	17	19	11	15	12	18	15	21	9	21	15	22	16	15	9	9
Routine Operations	6	10	6	10	11	5	8	6	10	8	9	7	9	8	18	10	8	7	7
Specialist Processes	7	11	7	11	13	5	9	7	11	9	10	8	10	9	17	9	9	8	3
Traffic Management	12	20	15	17	27	5	16	12	20	16	16	16	16	16	24	17	16	16	5
Working at Height	40	64	38	66	68	36	52	40	64	52	62	42	62	52	61	52	52	42	14

SITE INSPECTION FOCUS CATEGORIES DO NOT VARY MUCH THROUGH TIME OVER THE 18 MONTH HORIZON OF THIS REPORT. THIS CORRESPONDS TO THE UNCHANGING SHE SENSITIVITY BRIEFINGS GIVEN TO ADVISORY STAFF AND SITE TEAMS FOR THIS PERIOD.

### BEHAVIOURAL SAFETY HEAT MAP - PROCESS SENSITIVITY SUMMARY (WHAT ATTRACTS SITE SUPERVISION ATTENTION?)

Section Reporting Name	2012 Jan	2012 Feb	2012 Mar	2012 Apr	2012 May	2012 Jun	2012 Jul	2012 Aug	2012 Sep	2012 Oct	2012 Nov	2012 Dec	2013 Jan	2013 Feb	2013 Mar	2013 Apr	2013 May	2013 Jun	2013 Jul
Environmental	25	24	16	17	27	35	28	22	34	39	23	26	29	24	30	32	15	24	24
Health & Welfare	790	881	846	709	859	851	923	784	829	882	862	598	872	810	834	912	793	651	762
Management & Good Order	552	605	591	473	561	549	503	414	495	548	517	376	596	543	520	544	426	374	377
Public Protection	232	212	275	170	223	223	220	217	196	259	219	161	244	228	219	253	194	184	170
Routine Operations	359	375	344	302	409	344	368	330	362	518	412	244	359	378	335	386	312	234	269
Specialist Processes	51	48	32	51	58	37	48	48	40	49	57	24	46	55	35	55	37	31	28
Traffic Management	26	33	34	31	31	40	46	37	42	51	38	27	51	50	33	49	43	28	49
Working at Height	827	818	824	696	834	710	741	612	714	730	634	436	731	672	651	765	697	511	422

BEHAVIOURAL SAFETY FOCUS CATEGORIES DO NOT VARY MUCH THROUGH TIME OVER THE 18 MONTH HORIZON OF THIS REPORT. THIS CORRESPONDS TO THE UNCHANGING SHE SENSITIVITY BRIEFINGS GIVEN TO ADVISORY STAFF AND SITE TEAMS FOR THIS PERIOD.